

**5-10 ton
ENGINE POWERED
FORKLIFT**

h2000
SERIES **Reliable forklift**

HELI

CHINESE EXPORT BRAND

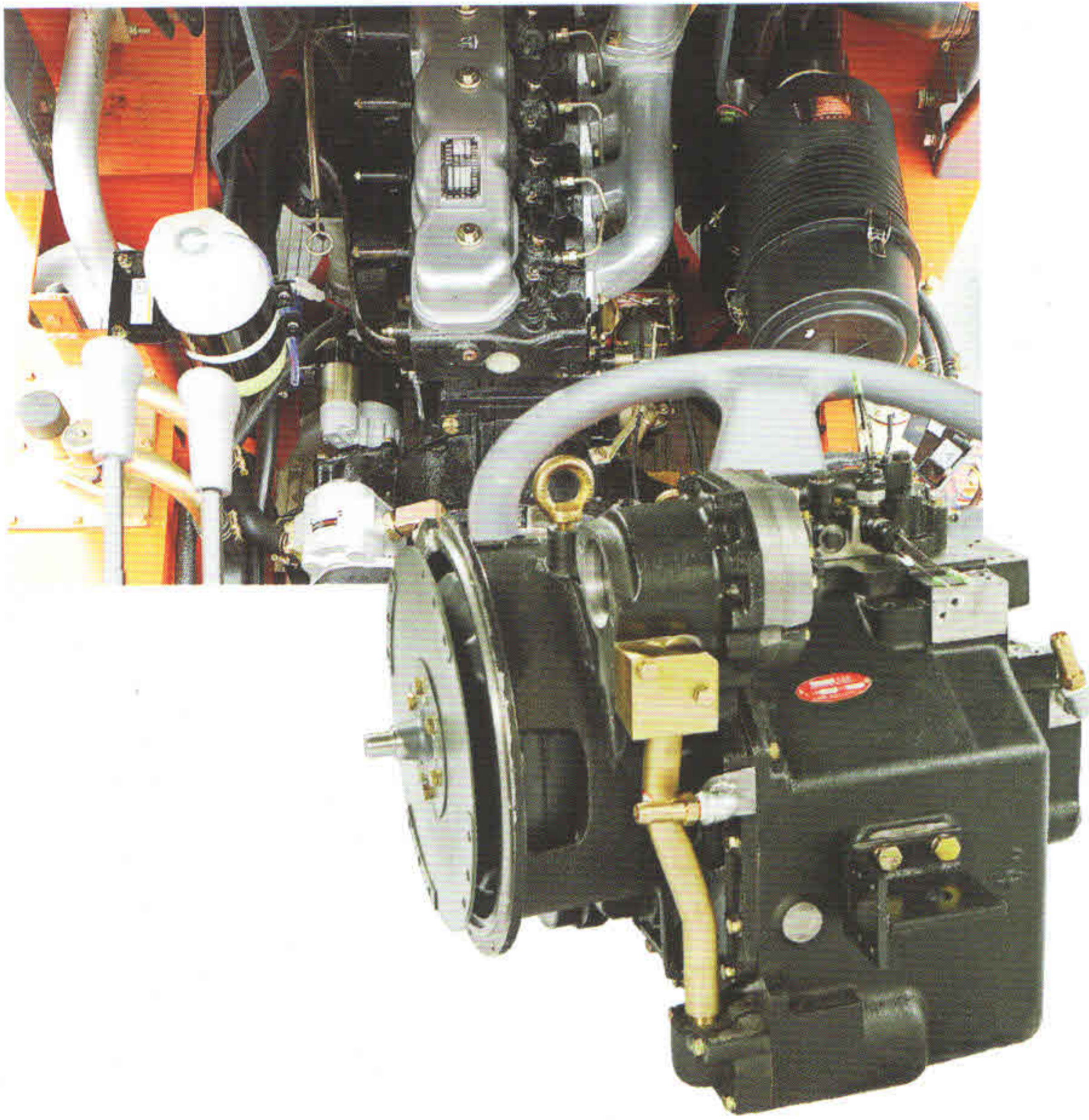
Recommended
By China Chamber of Commerce for Import and Export of Machinery
And Electric Products

ENGINE POWERED
FORKLIFT

5-10_{ton}

Reliable forklift

A reliable Drive system



As the most reliable transmission system produced by HELI, it has been validated by over twenty years' experience in the world market. Meanwhile, various ancillary devices of the power system ensure the reliability effectively.

- ✓ Durable transmission
- ✓ Equipped with the intake system
- ✓ Standard distribution of air filter pressure alarm device
- ✓ Automatic engine preheating system
- ✓ Cyclone Air Filter
- ✓ Lost foam casting
- ✓ Various high-power engines are available for customers' optional choices.



A reliable mast



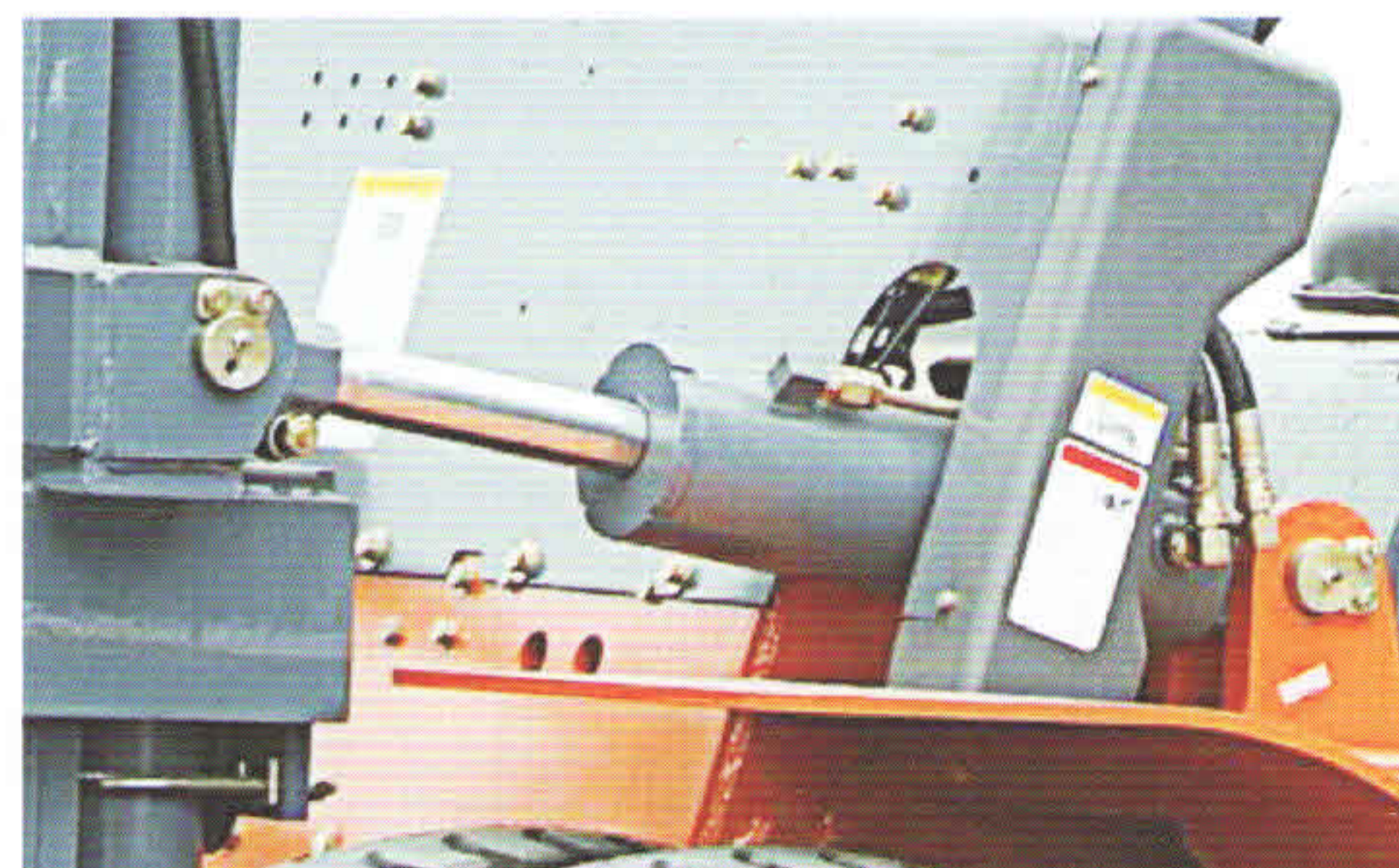
The high internal-qualified mast confirmedly ensures the safety of the operator, truck and cargo. Standard configuration of the wide-view mast enlarges operators' view effectively, and ensures loading /unloading operations more

- ✓ Using the best German steel material for triplex mast
- ✓ The frame of mast has more strength basing on the enlarged channel interface.

A reliable hydraulic system

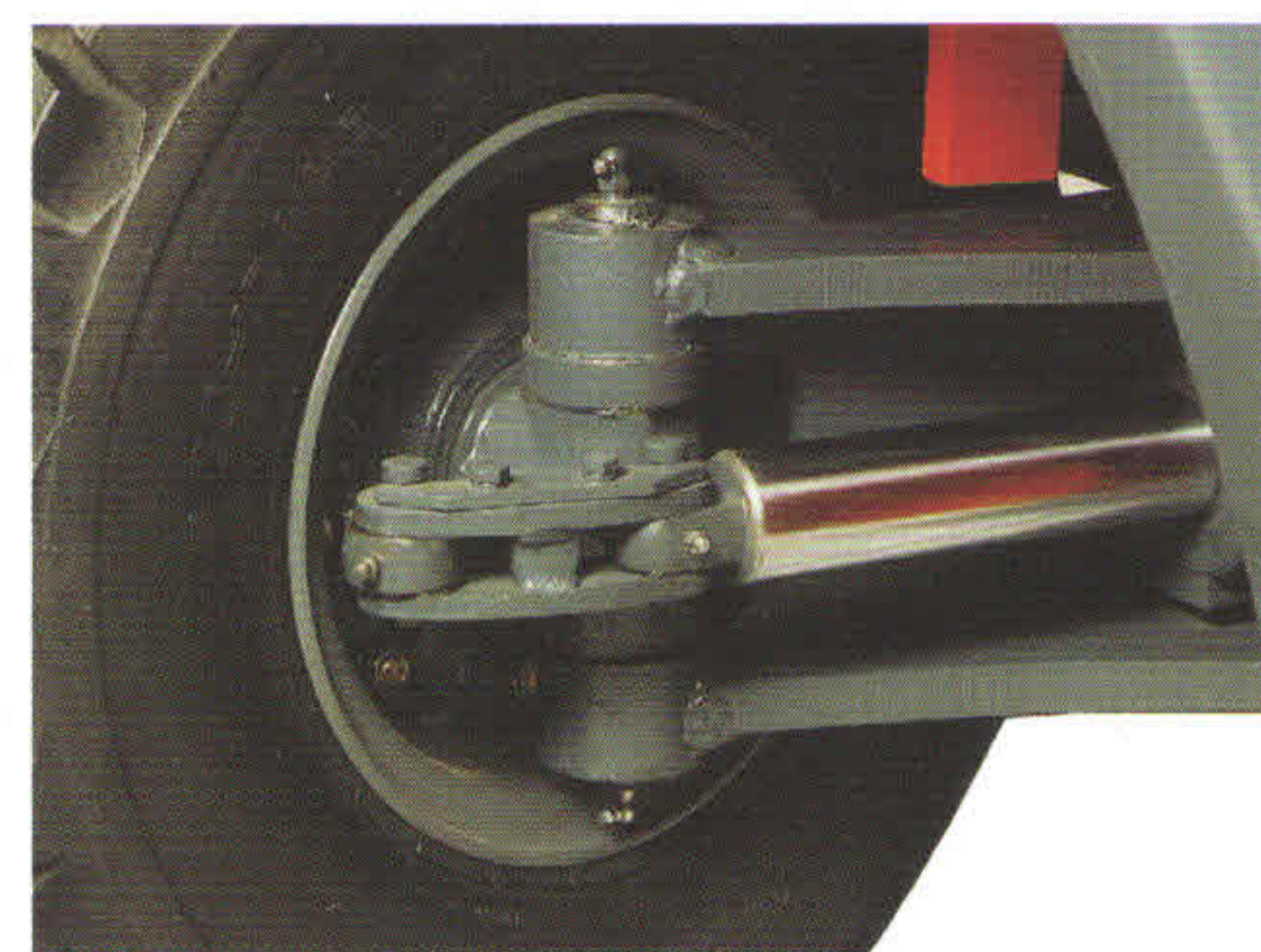
HELI has the most professional R&D base of cylinders, where we take advantage of the advanced manufacturing technologies and detecting means to ensure the reliability of all cylinders of the hydraulic system.

- ✓ Standard tilt cylinder by HELI
- ✓ Standard lift cylinder by HELI
- ✓ Standard steering cylinder by HELI
- ✓ Self-locking tilt cylinder
- ✓ Standard hydraulic circuit filter
- ✓ Speed buffer device on lifting system



A reliable steering system

The steering system with new technologies not only provides a smoother swerve and faster positioning & steering, but also effectively ensures operators' safety.

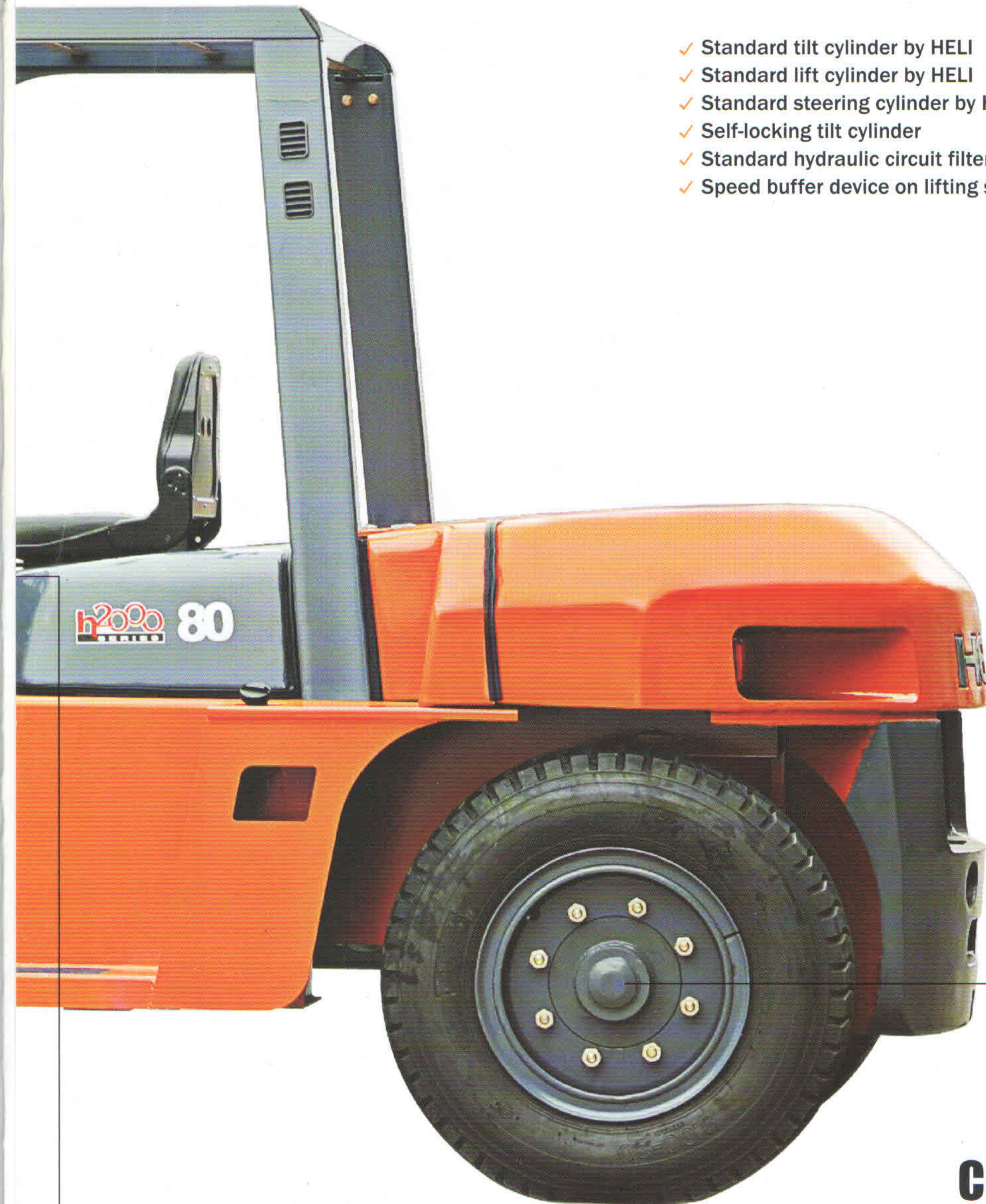


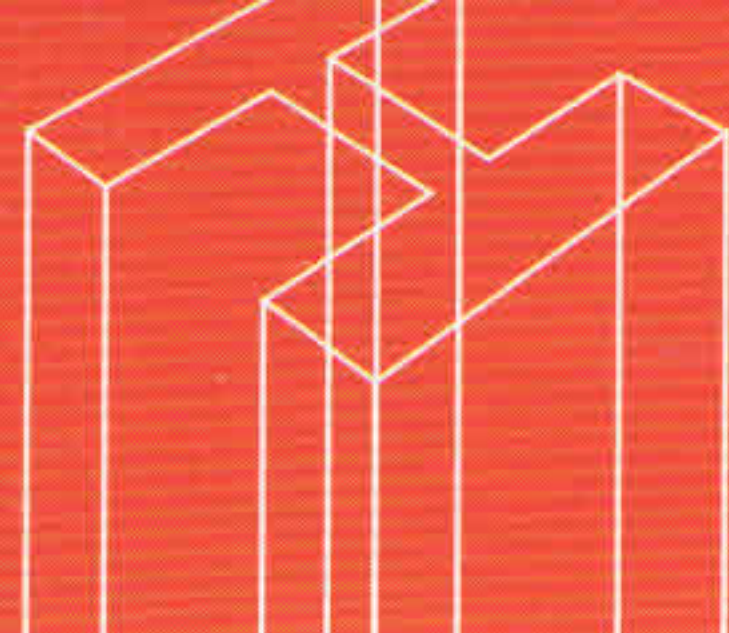
- ✓ Full hydraulic power steering
- ✓ Smaller turning radius
- ✓ Wearable tire

Comfortable operation space

Large operation space with ergonomic-design and configuration ensure the operation more comfortable & convenient, and effectively enhance the efficiency & safety of operation.

- ✓ Newly patented insulation materials of Bonnet
- ✓ Well-designed non-slip mat
- ✓ Special display with easily reading
- ✓ Standard files packet
- ✓ Standard distribution of overhead guide raincoat
- ✓ Filled with noise-reducing and buffer rubber material between bonnet and frameworks





ENGINE POWERED
FORKLIFT

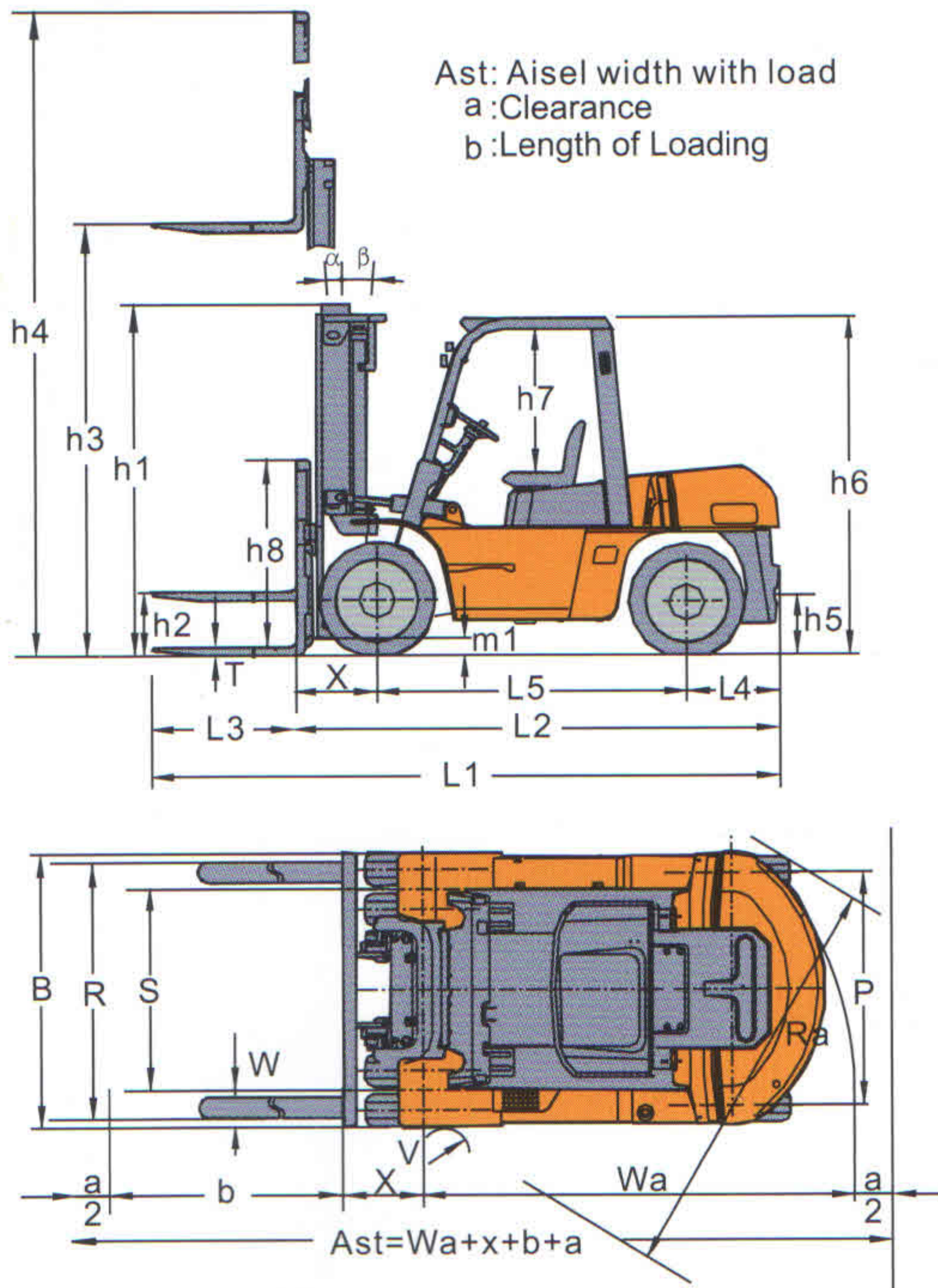
5-10 ton

Manufacturers Data and Design Characteristics

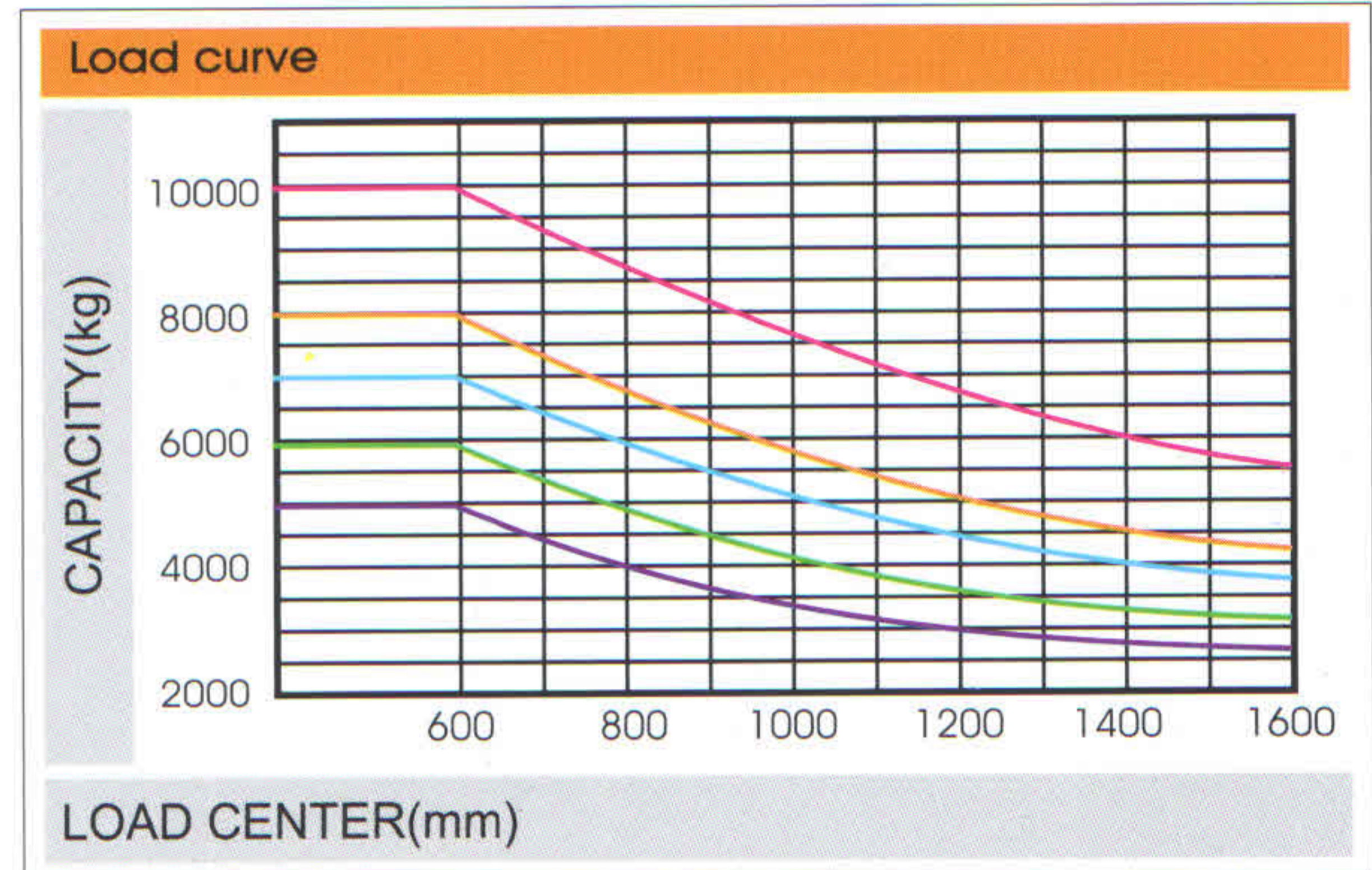
Characteristics								
1	Manufacturer							
2	Model			CPCD50	CPCD60	CPCD70	CPCD80	CPCD90
3	Power unit			Diesel				
4	Rated Capacity	kg		5000	6000	7000	8000	10000
5	Load Center	mm		600				
6	Operation			Driver Seated				
Dimensions								
7	Overall max.lifting height (with backrest)	h4	mm	4360	4350	4345	4360	4360
8	Max.lifting height	h3	mm					
9	Height mast retracted(upright)	h1	mm	2500	2500	2500	2700	2700
10	Free lift height	h2	mm			200		
11	Backrest height(from upper face of forks)	h8	mm	1360	1350	1345	1360	1360
12	Overhead Guard clearance(from face of seat)	h7	mm			1120		
13	Overall height(overhead guard)	h6	mm	2450	2450	2450	2560	2560
14	Overall length(with forks)	L1	mm	4660	4735	4800	5160	5160
15	Overall length(without forks)	L2	mm	3440	3515	3580	3940	3940
16	Front overhang	X	mm	590	590	590	700	700
17	Rear overhang	L4	mm	600	675	740	740	740
18	Wheel base	L5	mm	2250	2250	2250	2500	2500
19	Coupler height	h5	mm	430	430	430	540	540
20	Min.ground clearance under mast	m1	mm	200	200	200	245	245
21	Overall width	B	mm	1995	1995	1995	2165	2165
22	Lateral fork adjustment outside of fork(Max./Min.)	R	mm	1845/300	1845/300	1845/300	2000/340	2140/340
23	Tread(front)	S	mm	1470	1470	1470	1600	1600
24	Tread(rear)	P	mm	1700	1700	1700	1700	1700
25	Outside turning radius	Wa	mm	3250	3300	3370	3700	3700
26	Inside turning radius	V	mm	200	200	200	200	200
27	Min.intersecting aisle	Ra	mm	2960	3000	3040	3310	3310
28	Tilting angles(forward/backward)	α/β		6° /12°				
29	Fork dimensions(axbxc)		mm	55×1220×150	60×1220×150	65×1220×150	70×1220×170	80×1220×170
Performance								
30	Max. Traveling speeds(With/Without load)	km/h		26/28	26/28	26/28	26/30	26/30
31	Lifting Speeds(With/Without load)	mm/s		520/550	520/550	510/540	440/470	360/390
32	Lowering Speeds(With/Without load)	mm/s		≤600/≥300				
33	Max. Draw-bar pull,With load	kN		62	62	62	60	60
34	Max. Negotiable Gradient(With/Without load)	%		35/19	32/19	30/19	27/20	27/20
Weights								
35	Service Mass	kg		7980	8640	9350	10960	12000
36	Load Wheel with load(Front/Rear)	kg		11660/1320	13050/1590	14570/1780	17000/1960	20380/2300
37	Load Wheel without load(Front/Rear)	kg		4010/3970	3880/4760	3860/5490	4840/6120	5700/7000
Tyres								
38	Wheels number front/rear(x=driven)			4x/2				
39	Tyre Type			PNEUMATIC TYRE				
40	Tyre size(front)			8.25-15-14PR			9.00-20-14PR	
41	Tyre size(rear)			8.25-15-14PR			9.00-20-14PR	
42	Service Brake			Hydraulic-Foot Pedal				
43	Parking Brake			MECHANICAL-HAND BRAKE ROD				
Drive								
44	Battery (Voltage/Capacity)	V/Ah		2x12/80				
45	Internal Combustion Engine Model			Cummins QSB4.5				
46	Engine type			Electronic controlling, Turbocharged, Air-to-air intercooled diesel engine				
47	Internal Combustion Engine Rated Output	kW/rpm		82/2200				
48	Internal Combustion Engine Rated Torque	Nm/rpm		488/1500				
49	Internal Combustion Engine Number of Cylinder			4				
50	Internal Combustion Engine Displacement	L		4.5				
51	Internal Combustion Engine Fuel Tank Capacity	L		140				
52	Transmission type			Power Shift				
53	Transmission Number of Speed Fwd/Bwd			2/2	2/2	2/2	2/2	2/2

Engine Model and Main Specification for Option

Internal Combustion Engine Model	Engine type	Internal Combustion Engine Rated Output kW/rpm	Internal Combustion Engine Rated torque Nm/rpm	Internal Combustion Engine Displacement L	Internal Combustion Engine Number of Cylinder
Isuzu 6BG1	Normally Aspirated	82/2000	415/1400-1600	6.494	6



CPCD50 CPCD60 CPCD70 CPCD80 CPCD100



Note:

Capacities shown are computed with upright in vertical position, based on a 1000 mm cube load configuration with the center of gravity at the true center of the cube, and standard forks. Truck capacities with upright in forward tilt position will be less. Long forks, and unusually wide or loads may also reduce capacity.

8-10t WIDE VIEW MAST

Mast model	Max. Fork Height (mm)	Load Capacity (kg)		Overall Mast Height (At Lowered) (mm)		Service Weight (kg)		Tilting Angle (deg.)
		CPCD80	CPCD100	CPCD80	CPCD100	CPCD80	CPCD100	
M250	2500	8000	-	2450	-	10870	-	6-12
M270	2700	8000	-	2550	-	10920	-	6-12
M300	3000	8000	10000	2700	2850	10960	12150	6-12
M330	3300	8000	10000	2850	3000	11020	12215	6-12
M350	3500	8000	10000	2950	3100	11060	12260	6-12
M375	3750	8000	10000	3075	3225	11100	12310	6-12
M400	4000	8000	10000	3250	3400	11310	12450	6-12
M425	4250	8000	10000	3375	3525	11360	12510	6-12
M450	4500	8000	10000	3500	3650	11400	12560	6-12
M475	4750	7750	10000	3625	3775	11450	12620	6-6
M500	5000	7750	10000	3750	3900	11500	12670	6-6
M550	5500	7400	9000	4050	4200	11740	12910	3-6
M600	6000	7000	8000	4300	4450	11830	13020	3-6

8-10t WIDE VIEW FULL FREE 3-STAGE MAST

Mast model	Max. Fork Height (mm)	Load Capacity (kg)		Overall Mast Height (At Lowered) (mm)		Service Weight (kg)		Free lift with Backrest (mm)		Tilting Angle Fwd/Bwd (deg.)
		CPCD80	CPCD100	CPCD80	CPCD100	CPCD80	CPCD100	CPCD80	CPCD100	
ZSM360	3600	7000	8000	2450	2570	11350	12580	1092	1310	6-12
ZSM400	4000	7000	8000	2575	2700	11420	12640	1217	1440	6-12
ZSM435	4350	7000	8000	2700	2820	11490	12700	1342	1560	6-12
ZSM480	4800	7000	7500	2850	2970	11570	12760	1492	1710	6-6
ZSM500	5000	7000	7500	2950	3035	11640	12810	1592	1775	6-6
ZSM540	5400	6600	7000	3075	3225	11710	12880	1717	1965	3-6
ZSM600	6000	6000	6000	3375	3425	12050	12960	2017	2165	3-6
ZSM650	6500	5500	5600	3600	3595	12150	13250	2242	2335	3-6
ZSM700	7000	4500	-	3750	-	12240	-	2392	-	3-6

NOTE: 8t FREE LIFTING HEIGHT WITHOUT LIFT-BRACKET +213mm(10t without backrest)

Reliable forklift



SIDE SHIFTER ON 10T FREE LIFTING MAST

Mast model	Max. Fork Height (mm)	Load Capacity (kg)	Overall Mast Height (At Lowered) (mm)	Tilting Angle Fwd/Bwd (deg.)	Service Weight (kg)
ZSM360	3600	8000	2570	6-12	12580
ZSM400	4000	8000	2700	6-12	12640
ZSM435	4350	8000	2820	6-12	12700
ZSM480	4800	7500	2970	6-6	12760
ZSM500	5000	7500	3035	6-6	12810
ZSM540	5400	7000	3225	3-6	12880
ZSM600	6000	6000	3425	3-6	12960

5-7t WIDE VIEW MAST

Mast model	Max. Fork Height (mm)	Load Capacity (kg)			Overall Mast Height (At Lowered) (mm)			Service Weight (kg)			Tilting Angle (deg.)
		CPCD50	CPCD60	CPCD70	CPCD50	CPCD60	CPCD70	CPCD50	CPCD60	CPCD70	
M200	2000	5000	6000	7000	2000			7836	8496	9206	6-12
M250	2500	5000	6000	7000	2250			7900	8560	9270	6-12
M270	2700	5000	6000	7000	2350			7930	8590	9300	6-12
M300	3000	5000	6000	7000	2500			7980	8640	9350	6-12
M330	3300	5000	6000	7000	2650			8030	8690	9400	6-12
M350	3500	5000	6000	7000	2750			8060	8720	9440	6-12
M375	3750	5000	6000	7000	2875			8100	8760	9480	6-12
M400	4000	5000	6000	7000	3050			8270	8930	9650	6-12
M425	4250	5000	6000	7000	3175			8310	8970	9690	6-12
M450	4500	5000	6000	7000	3300			8350	9010	9730	6-12
M475	4750	5000	6000	7000	3425			8390	9050	9770	6-6
M500	5000	5000	6000	7000	3550			8430	9090	9810	6-6
M550	5500	4750	5700	6600	3850			8630	9290	10000	3-6
M600	6000	4400	5400	6400	4100			8710	9370	10080	3-6

5-7t WIDE VIEW FULL FREE 2-STAGE MAST

Mast model	Max. Fork Height (mm)	Load Capacity (kg)			Overall Mast Height (At Lowered) (mm)			Service Weight with Backrest (kg)			Free lift with Backrest (mm)	Tilting Angle Fwd/Bwd (deg.)
		CPCD50	CPCD60	CPCD70	CPCD50	CPCD60	CPCD70	CPCD50	CPCD60	CPCD70		
ZM250	2500	5000	6000	7000	2210			8010	8670	9380	837	6-12
ZM270	2700	5000	6000	7000	2310			8040	8700	9410	937	6-12
ZM300	3000	5000	6000	7000	2460			8090	8750	9460	1087	6-12
ZM330	3300	5000	6000	7000	2610			8140	8800	9510	1237	6-12
ZM350	3500	5000	6000	7000	2710			8170	8830	9540	1337	6-12
ZM375	3750	5000	6000	7000	2835			8210	8870	9580	1462	6-12
ZM400	4000	5000	6000	7000	3010			8370	9030	9740	1637	6-12
ZM425	4250	5000	6000	7000	3135			8410	9070	9780	1762	6-12
ZM450	4500	5000	6000	7000	3260			8450	9110	9820	1887	6-12
ZM475	4750	5000	6000	7000	3385			8490	9150	9860	2012	6-6
ZM500	5000	5000	6000	7000	3510			8530	9190	9900	2137	6-6
ZM550	5500	4750	5700	6600	3810			8730	9390	10100	2437	3-6
ZM600	6000	4400	5400	6400	4060			8810	9470	10180	2687	3-6

NOTE: 5-6\FREE LIFTING HEIGHT WITHOUT LIFT-BRACKET +465mm
7\FREE LIFTING HEIGHT WITHOUT LIFT-BRACKET +310mm

5-7t WIDE VIEW FULL FREE 3-STAGE MAST

Mast model	Max. Fork Height (mm)	Load Capacity (kg)			Overall Mast Height (At Lowered) (mm)			Service Weight with Backrest (kg)			Free lift with Backrest (mm)	Tilting Angle Fwd/Bwd (deg.)
		CPCD50	CPCD60	CPCD70	CPCD50	CPCD60	CPCD70	CPCD50	CPCD60	CPCD70		
ZSM360	3600	4500	5600	6200	2335			8670	9330	10020	962	6-6
ZSM400	4000	4500	5600	6200	2470			8730	9390	10080	1097	6-6
ZSM435	4350	4500	5600	6200	2585			8790	9450	10120	1212	6-6
ZSM480	4800	4500	5600	6200	2740			8980	9640	10310	1367	6-6
ZSM500	5000	4500	5600	6200	2805			9010	9670	10340	1432	3-6
ZSM540	5400	4200	5300	6000	2940			9080	9740	10510	1567	3-6
ZSM600	6000	4000	5000	5500	3140			9170	9830	10690	1767	3-6
ZSM650	6500	3600	4300	4500	3405			9280	9940	10810	2032	3-6
ZSM700	7000	3000	3500	3700	3515			9390	10050	10920	2142	3-6

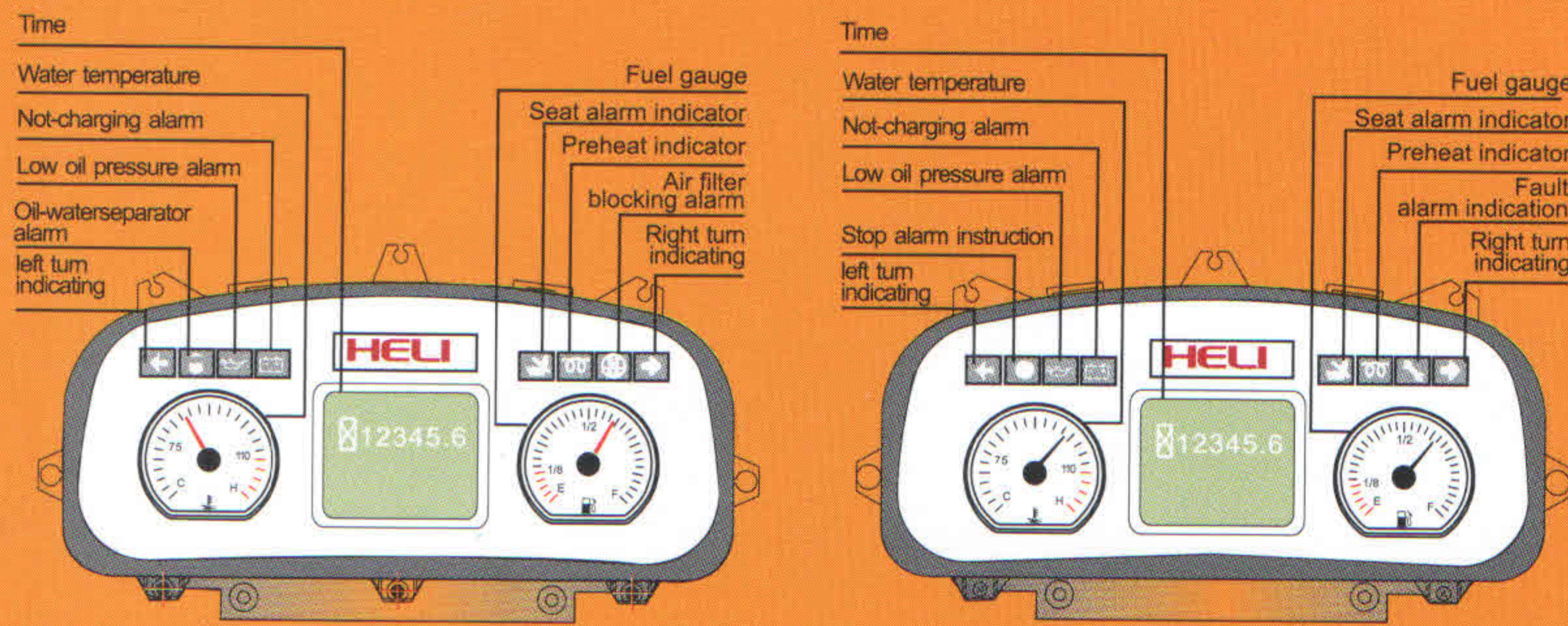
NOTE: 5-6\FREE LIFTING HEIGHT WITHOUT LIFT-BRACKET +465mm
7\FREE LIFTING HEIGHT WITHOUT LIFT-BRACKET +310mm

Reliable forklift

Reliable special designed instrument

The reliable special instrument gives a complete display of the vital information, like operation status, fault detection, etc. It ensures the operator predominate the vehicle status more intuitive and convenient.

- ✓ Stepping motor core
- ✓ Programmable LCD
- ✓ Electrical safety standard meets CE requirements



H Series 5-10T engine with Cummins QSB4.5

5-10 ton

ENGINE POWERED FORKLIFT

STANDARD EQUIPMENT

Hour meter	Overhead guard
Horn	Standard forks
Oil pressure alarm	Neutral switch
Three-spool control vavle	Hydraulic circuit oil filter
Power steering	Radiator tank
Rubber pedal pad	Speed -limiting valve
Backrest	Oil meter
Back view mirror	Battery-charge indicator
Front combined lights	Wide-view mast
Transmission oil filter	Intake device
Engine flameout device	Durable tire
Parking brake cable	Operating handles
Water temperature meter	Traction pin
Attached tools	Standard seat
Rear combined lights	Hudraulic oil gauge
Reversing buzzer	Overhead guard raincoat
Self-locking tilt valve	Torque converter oil gauge
Tilt adjustable steering column	Combined dispaly

OPTIONS

Cab	Tilt cylinder sleeve
Rotating warning light	Steering cylinder sleeve
Vertical exhaust	User-specified color
Double air filter	Optional attachments
Suspension seat	
Extended fork sleeve	
Heater	
Solid tire	
Widening fork carriage	
Windglass	
Purifying muffler	
Fire muffler	
Fire extinguisher	
Rear lights	
Air conditioning (some models)	
Electro-hydraulic switch	
OPS driving control	
Torque converter oil temperature meter	

"REPA" SIA
 Maskavas 326,
 LV1063, Rīga, Latvija
 tālr.: +371 67187956
 fakss: +371 67189139
 e-pasts: repa@repa.lv
 www.repa.lv

ANHUI HELI CO., LTD.

ADDR 15 WEST WANGJIANG ROAD, HEFEI, ANHUI, P.R. CHINA
 TEL (86 551)3639068,3639258,3639358
 FAX (86 551)3639966
 WEBSITE <http://www.helichina.com>

AUTHORIZED DEALER



TOP1 FORKLIFT MANUFACTURING AND SALE
 IN CHINA CONTINUOUSLY FOR 21 YEARS

* Details of specifications and equipment are based on information available at the time of printing and may change without notice.